



PARENTIUM PREMIUM  
*Real Estate*

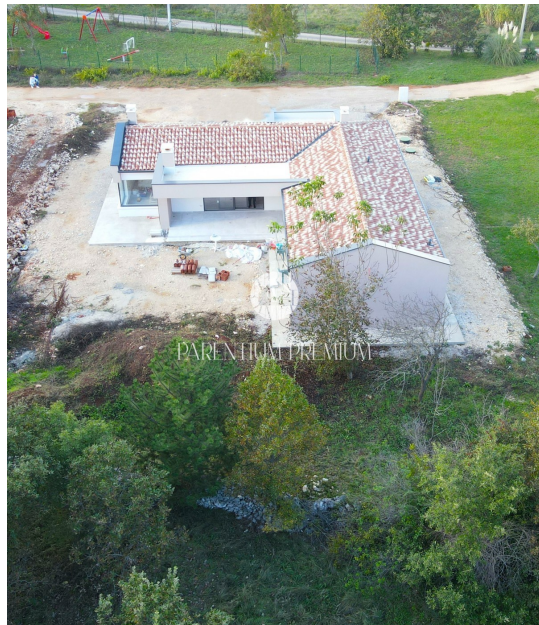
**PARENTIUM PREMIUM REAL ESTATE**

**Vukovarska 19, 52440 Poreč**

**mail: [office@parentium-realestate.com](mailto:office@parentium-realestate.com)**

**web: [www.parentium-realestate.com](http://www.parentium-realestate.com)**

**info: +385 99 21 46 917 | +385 98 99 46 041**



<b>Code :</b>	01530
<b>Location :</b>	Labin
<b>Building size :</b>	185 m2
<b>Lot size :</b>	1000 m2
<b>Distance from center :</b>	3500 m
<b>Distance from sea :</b>	8000 m
<b>Number of rooms :</b>	4
<b>Number of bedrooms :</b>	3
<b>Number of bathrooms :</b>	2
<b>Parking :</b>	Yes
<b>Basement :</b>	Yes
<b>Underfloor heating :</b>	Yes
<b>Air conditioning heating :</b>	Yes
<b>Heating by fireplace :</b>	Yes
<b>Year of construction :</b>	2023
<b>Energy efficiency :</b>	Not specified

**Price :** 560.000 €

In the town of Labin, there is a spacious new house in a quiet suburb. This property impresses with its simple but elegant appearance and practical space layout.

The house consists of a spacious living area that combines the kitchen, dining room and living room. The large terrace offers a pleasant place to relax. Two of the three bedrooms share one bathroom, while the third bedroom has its own bathroom for added privacy.

In addition, the house will be equipped with LED lighting that creates a pleasant atmosphere. Air conditioners will ensure pleasant temperatures throughout the year, but the first phase of central heating has also been installed. Also, the house has a chimney for those who like to enjoy the crackling of wood on cold winter evenings.

The price includes all equipment and furniture. Although it does not include a garage and a pool, there is a possibility of building them with a price adjustment.

This house is ideal both for a quiet family life and for an investment in a tourist rental.