



PARENTIUM PREMIUM  
*Real Estate*

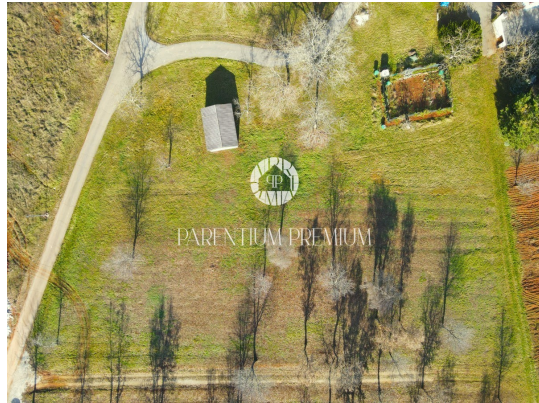
**PARENTIUM REAL ESTATE**

**Vukovarska 19, 52440 Poreč**

**mail: [office@parentium-realestate.com](mailto:office@parentium-realestate.com)**

**web: [www.parentium-realestate.com](http://www.parentium-realestate.com)**

**info: +385 99 21 46 917 | +385 98 99 46 041**



<b>Code :</b>	01625
<b>Location :</b>	Poreč
<b>Building size :</b>	0 m2
<b>Lot size :</b>	3366 m2
<b>Distance from center :</b>	17000 m
<b>Distance from sea :</b>	15000 m

**Price :** 403.920 €

The land of 3366 m2 that is available for sale is located along the west coast of Istria, only 4 km away from a dynamic small town that offers everything you need for a comfortable life - schools, kindergartens, shops, restaurants, cafes, wineries and even agritourism. For additional variety and facilities, the city of Poreč is only 17 km away.

In addition to its regular shape, the land is ideal for building family houses or houses for rent. It already has an access road, and water and electricity are available in the immediate vicinity, facilitating the construction process and ensuring practicality. It is located on the edge of a construction zone, offering a combination of urban life and natural surroundings.

This is the perfect place to create a new home, offering peace and privacy with plenty of space for your ideas and plans, with all the necessary resources already at hand.